



Release Notes

WITE32

Version 4.06

05/12/2009

CHAPTER 1

MODIFICATIONS IN WITE32

The release 4.06 of WITE32 incorporates new features and bug fixes introduced after the release version 4.05. This document uses the release notes for WITE32 version 4.05 as a baseline for comparison.

1.1 New V2002 Tooling Type

The following cartridge and media set for V2002 spinstand is supported for the first time in WITE32 version 4.06:

<i>Cartridge Part Number</i>	<i>Media Size</i>
80-704946/704947	2.5"

1.2 New Headamplifiers

<i>New Headamplifiers</i>		
PA2740	SR3780ABA	

1.3 WITE32 Modifications

1.3.1 Headamplifiers with 16 Gain Steps

PA2740 is the first headamplifier that supports 16 gain steps. The PA2740 headamplifier will not work with the previous WITE32 releases, you must use version 4.06 or later.

1.3.2 Single-Ended and Differential Thermal Flight Control

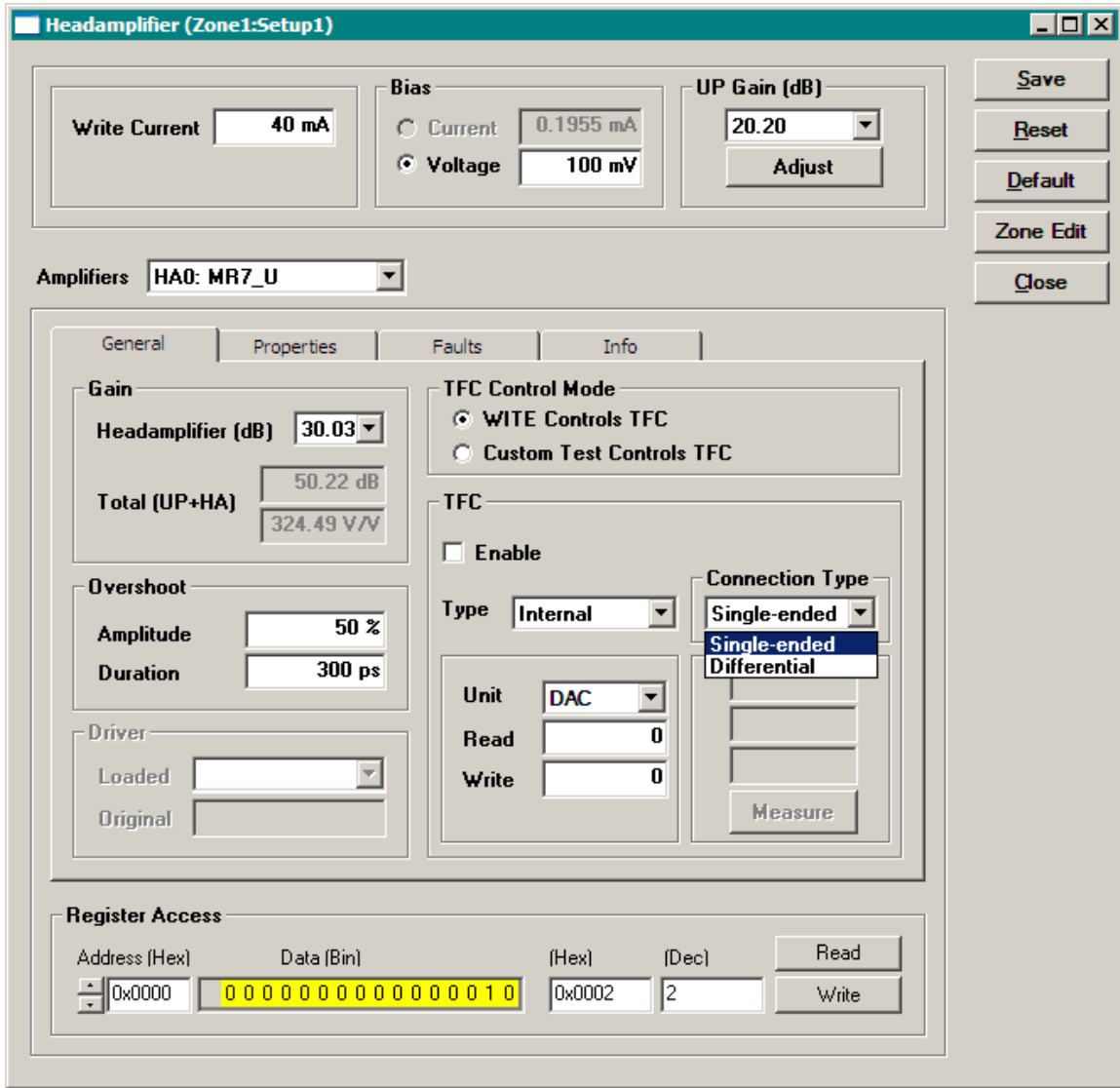


Figure 1 Single-Ended and Differential TFC

The MR7 headamplifier MR7_U supports software-selectable single-ended and differential TFC connections to the heater, see Figure 1. In the single-ended mode, the negative output of the heater driver is disconnected from the F- pin. In the differential mode both the positive and the negative output of the driver are connected to the F+ and the F- pins, respectively.

If a head with a single ended heater is installed, and the differential mode is selected in the *Headamplifier* dialog box, a warning message is displayed, and the TFC is shut off.

To check the TFC currents and voltages press the *Measure* button on the TFC tab, see Figure 2. For MR7 headamplifiers TFC current and voltage properties show the TFC currents and voltages per positive and negative shoulders, which is useful for the differential mode, see Figure 3. To update the property values press *Refresh*.

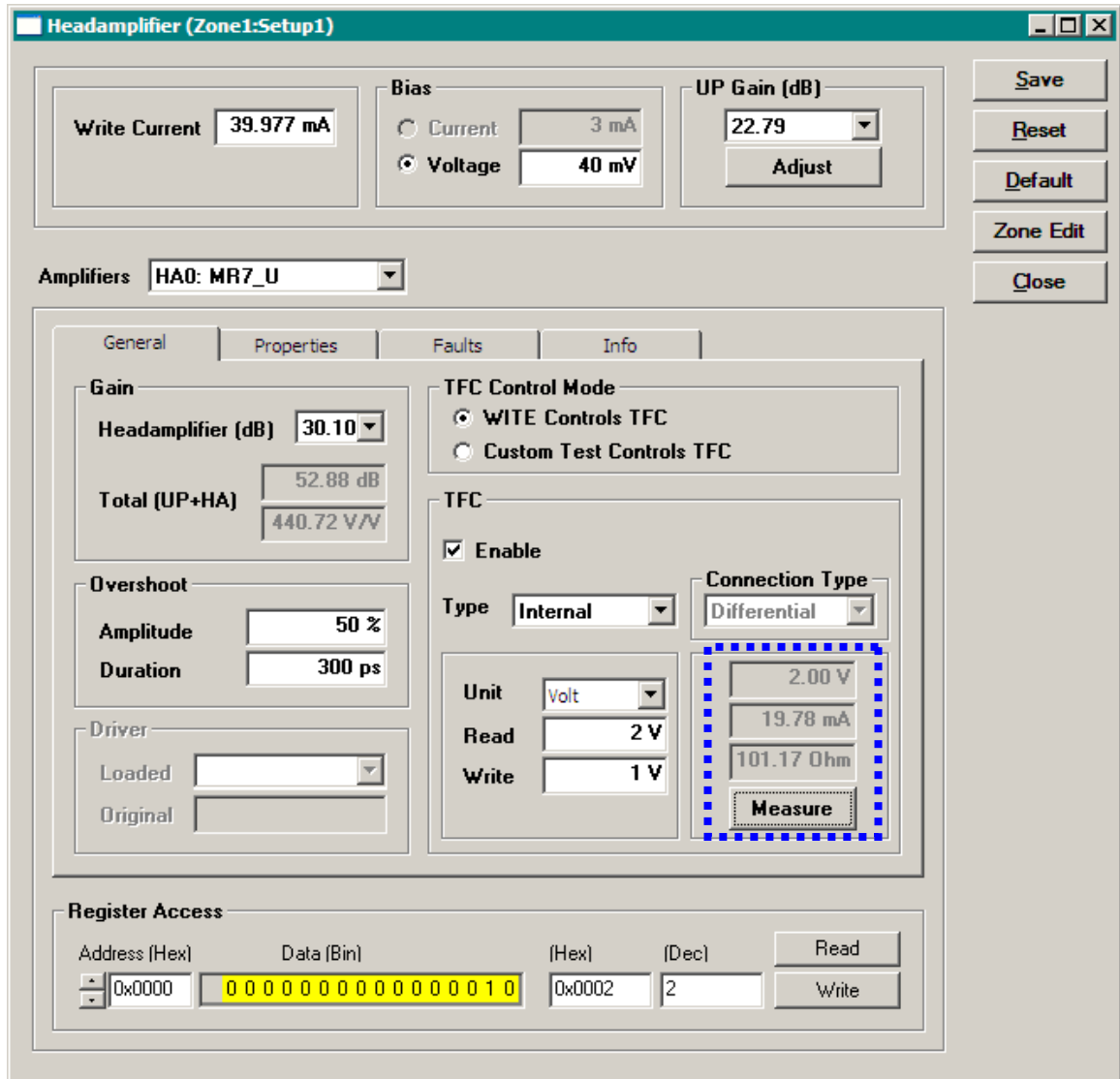


Figure 2 Measure TFC Current Using the Measure Button

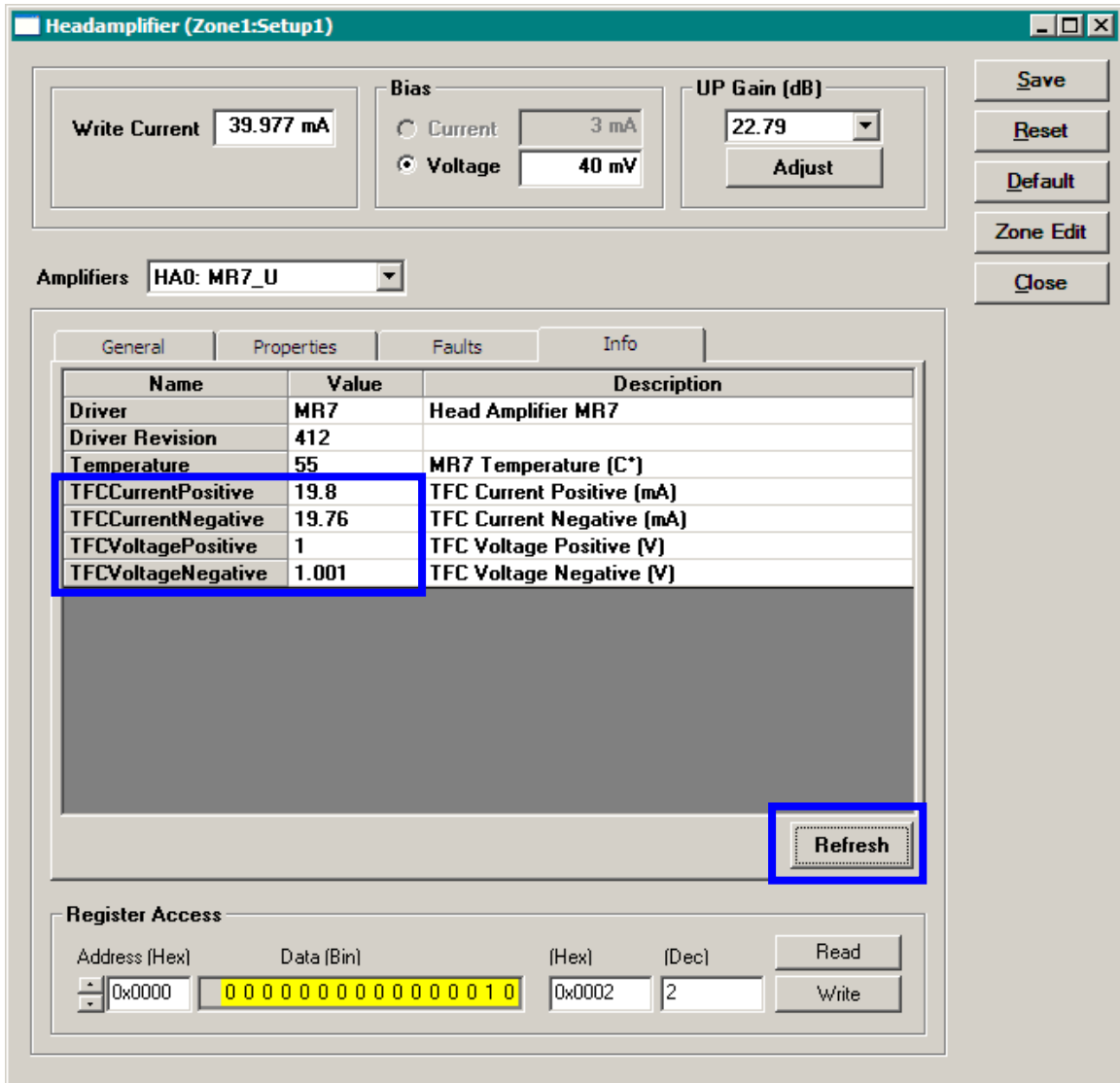


Figure 3 Measure TFC Current Using MR7 Properties

To protect head and media, the *Connection Type* selection is disabled once the device is started.

1.3.3 Fixed Bug

Commercial headamplifiers working with UP10 do not set the TFC read and write power correctly in the power mode. For example, when 50 mW is set using a 100 Ohm load, the output is zero instead of the expected 2.3 V.

Note: The description of a bug explains the bug behavior as it appears in WITE32 version 4.05.